

### FEATURES

- Sensor operated foaming soap dispenser
- Self-adjusting sensor spout with base unit, mounting hardware and supply lines
- Chrome plated
- Single-hole mount
- TOTO Soap required
- Refillable tank system
- ADA compliant

### COLORS/FINISHES

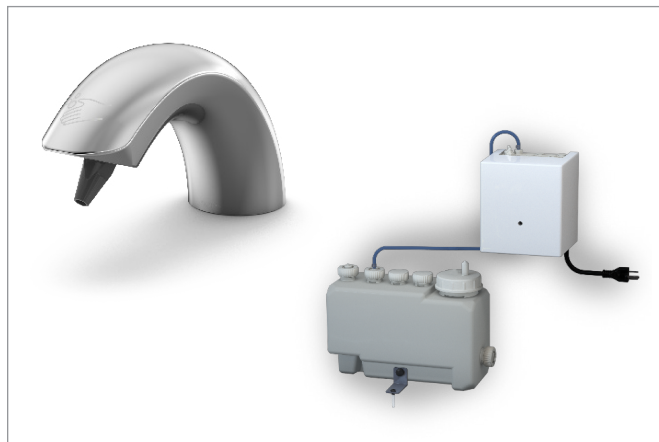
- #CP Polished Chrome

### OPTIONAL ACCESSORY

- THP3140#CP  
Escutcheon 1-1/8" ~ 1-1/2" (28mm~38mm)
- THP3374  
Mount Bracket

### MODELS

- **TES201AA#CP (1 Spout)**  
TLK03001G#CP (Spout x 1 pc)  
TLK01101U (Controller for 1 Spout & Reservoir)
- **TES202AA#CP (2 Spouts)**  
TLK03001G#CP (Spout x 2 pcs)  
TLK01102U (Controller for 2 Spouts & Reservoir)
- **TES203AA#CP (3 Spouts)**  
TLK03001G#CP (Spout x 3 pcs)  
TLK01103U (Controller for 3 Spouts & Reservoir)



### Auto Functions

### PRODUCT SPECIFICATION

TOTO® Model No. \_\_\_\_\_  
 Product shall be automatic infrared sensor activated.  
 Product shall have automatic sensor adjustment upon installation. Soap dispenser and controller w/ reservoir will be sold separately. Product shall have a controller pump with 0.8 gallon (3L) reservoir.

### CODES/STANDARDS

- Meets and exceeds UL1951, CSA C22.2 #68
- Certifications: UL
- Code Compliance: NEC, CEC
- ADA Compliant



### COMPONENT BREAKDOWN

#### Soap Dispenser Specification Details

Step 1: Choose quantity of spouts desired

Step 2: Select kit or by individual component quantities

KIT OPTIONS			COMPONENTS			
Kit Model #	Spout Installation		SPOUT		CONTROLLER & RESERVOIR	
			Model #	Spout Qty	Model #	Component Qty
TES201AA#CP	1	→	TLK03001G#CP	1	TLK01101U	1 (For 1 Spout)
TES202AA#CP	2	→	TLK03001G#CP	2	TLK01102U	1 (For 2 Spouts)
TES203AA#CP	3	→	TLK03001G#CP	3	TLK01103U	1 (For 3 Spouts)

# TES20(1/2/3)AA Series

## Auto Sensor TOTO Soap Dispenser

### SPECIFICATIONS

<b>Power Supply</b>	AC 120V
<b>Wattage</b>	(TLK01101U) 4W (TLK01102U) 6.5W (TLK01103U) 9W
<b>Sensor Detection Range</b>	5-1/8" ~ 7-7/8" (130~200mm) Sensor is self-adjusting
<b>Ambient Temperature</b>	34-104°F(1-40°C)
<b>Humidity</b>	Max. 90% RH
<b>Power Cord Length</b>	55" (1.4 m)
<b>Soap Output Volume</b>	0.04 oz (factory setting)
<b>Tank Capacity</b>	Approximately 0.8 gal (3L)
<b>Warranty</b>	*Three Year Warranty

\*Failure to use TOTO soap will void warranty

### INSTALLATION NOTES

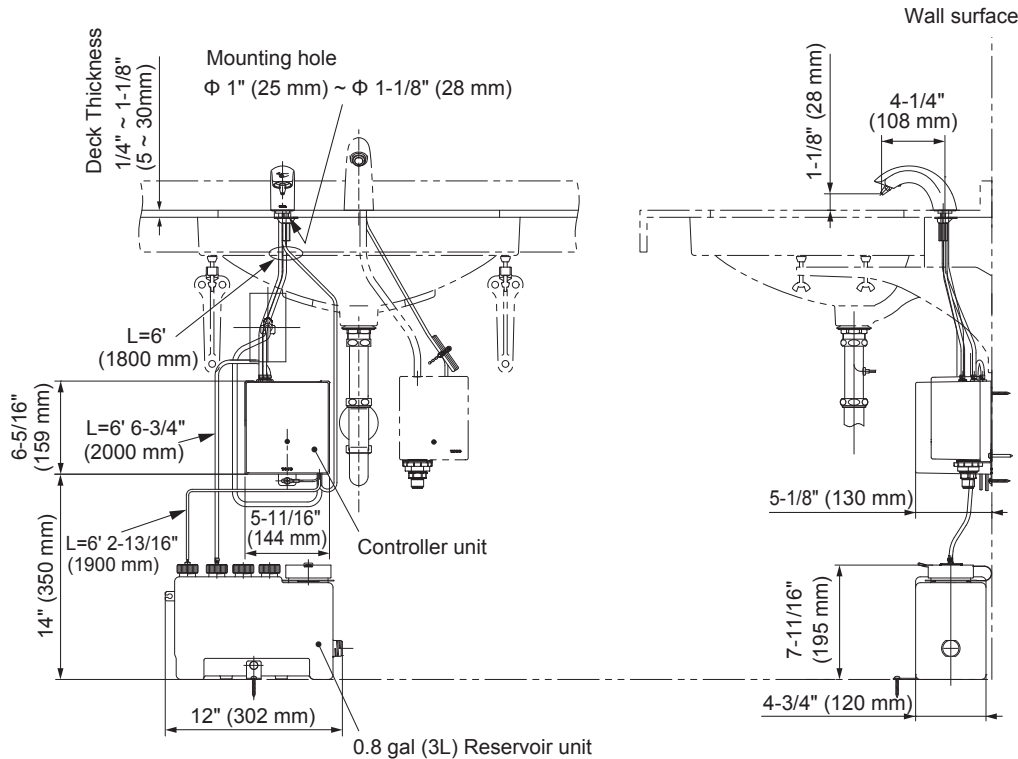
- Spout Mounting Hole  $\phi 1" \sim \phi 1\text{-}1/8"$  ( $\phi 25 \sim \phi 28$  mm)
- Deck Thickness  $1/4" \sim 1\text{-}1/8"$  (5 ~ 30 mm)

### TOTO SOAP *(Sold Separately)*

SKU No.	Quantity	Packaging	Notes
TSFG1	4 gal.	Package of 4, 1 gal. each	Antimicrobial Soap (Fragrance Free)
TSFG5	5 gal.	Package of 1, 5 gal. each	Antimicrobial Soap (Fragrance Free)
TSFG55	55 gal.	Package of 1, 55 gal. each	Antimicrobial Soap (Fragrance Free)
TSFB1-GS	4 gal.	Package of 4, 1 gal. each	TOTO Foam Soap Green Seal™ (Lilac)
TSFB5-GS	5 gal.	Package of 1, 5 gal. each	TOTO Foam Soap Green Seal (Lilac)



### DIMENSIONS



**TOTO**

These dimensions and specifications are subject to change without notice